

重组小鼠白介素22(IL-22)

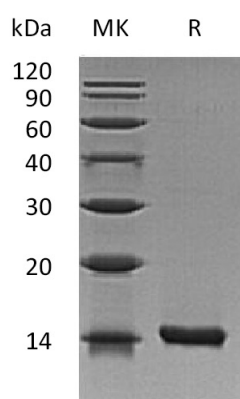
IL-22, Recombinant Mouse Interleukin-22

Cat. No.: MA1382-1 Size: 10µg

Source:	E.coli
Description:	Recombinant Mouse Interleukin-22 is produced by our E.coli expression system and the target gene encoding Leu34-Val179 is expressed.
Accession:	Q9JJY9
Known As:	Interleukin-22; IL-22; IL-10-Related T-Cell-Derived-Inducible Factor; IL-TIF; IL-TIF Alpha; Interleukin-22a; IL-22a; IL22; IL22a; ILt2f; ILt2fa
Predicted Mol Mass:	16.7 KDa
Apparent Mol Mass:	15 KDa, reducing conditions
Endotoxin:	< 0.01 EU/µg as determined by LAL test.
Formulation:	Lyophilized from a 0.2 µm filtered solution of 20mM PB, 150mM NaCl, pH 7.0.
Reconstitution:	Always centrifuge tubes before opening. Do not mix by vortex or pipetting. It is not recommended to reconstitute to a concentration less than 100µg/ml. Dissolve the lyophilized protein in distilled water. Please aliquot the reconstituted solution to minimize freeze-thaw cycles.
Shipping:	The product is shipped at ambient temperature. Upon receipt, store it immediately at the temperature listed below.
Storage:	Lyophilized protein should be stored at ≤ -20°C, stable for one year after receipt. Reconstituted protein solution can be stored at 2-8°C for 2-7 days. Aliquots of reconstituted samples are stable at ≤ -20°C for 3 months.
Background:	Interleukin-22 (IL-22) was initially identified as a gene induced by IL-9 in mouse T cells and mast cells. Mouse IL-22 cDNA encodes a 179 amino acid residue protein with a putative 33 amino acid signal peptide that is cleaved to generate a 147 amino acid mature protein that shares approximately 79% and 22% sequence identity with human IL22 and IL10, respectively. IL22 has been shown to activate STAT-1 and STAT-3 in several hepatoma cell lines and up-regulate the production of acute phase proteins. IL-22 is produced by normal mouse T cells upon Con A activation. Mouse IL-22 expression is also induced in various organs upon lipopolysaccharide injection, suggesting that IL-22 may be involved in inflammatory responses. The functional IL-22 receptor complex consists of two receptor subunits, IL-22R (previously an orphan receptor named CRF2-9) and IL-10Rβ (previously known as CRF2-4), belonging to the class II cytokine receptor family.

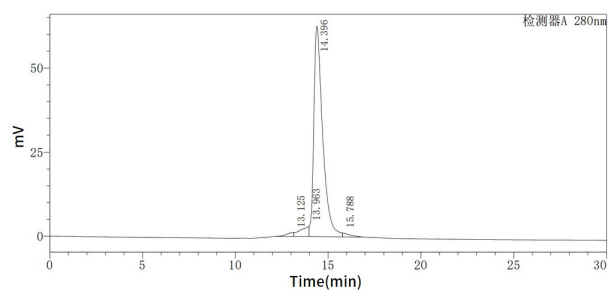


Purity-SDS-PAGE:



Greater than 95% as determined by reducing SDS-PAGE.

Purity-SEC-HPLC:



Greater than 95% as determined by SEC-HPLC. (Regularly tested)

