

重组人白介素17B(IL-17B)

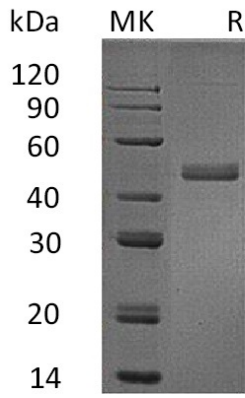
IL-17B,Human;Recombinant Human Interleukin 17B(C-Fc)

Cat. No.: MA1396-1 Size: 10μg

Source:	Human Cells
Description:	Recombinant Human Interleukin-17B is produced by our Mammalian expression system and the target gene encoding Gln21-Phe180 is expressed with a human IgG1 Fc tag at the C-terminus.
Accession:	Q9UHF5
Known As:	cytokine Zcyto7;IL-17B; interleukin-17 beta; interleukin-17B;neuronal interleukin-17 related factor; Neuronal interleukin-17-related factor; NIRF; ZCYTO7interleukin-Cytokine Zcyto7; cytokine-like protein ZCYTO7; interleukin-17 beta;interleukin-17B; interleukin 17B; neuronal interleukin-17 related factor; Neuronal interleukin-17-related factor;
Predicted Mol Mass:	45.1 KDa
Apparent Mol Mass:	48 KDa, reducing conditions
Endotoxin:	< 1 EU/μg as determined by LAL test.
Formulation:	Lyophilized from a 0.2 μm filtered solution of 20mM PB, 150mM NaCl, pH 7.4.
Reconstitution:	Always centrifuge tubes before opening.Do not mix by vortex or pipetting. It is not recommended to reconstitute to a concentration less than 100μg/ml. Dissolve the lyophilized protein in distilled water. Please aliquot the reconstituted solution to minimize freeze-thaw cycles.
Shipping:	The product is shipped at ambient temperature. Upon receipt, store it immediately at the temperature listed below.
Storage:	Lyophilized protein should be stored at ≤ -20°C, stable for one year after receipt. Reconstituted protein solution can be stored at 2-8°C for 2-7 days. Aliquots of reconstituted samples are stable at ≤ -20°C for 3 months.
Background:	Interleukin-17B (IL-17B) is a member of IL-17 cytokines family that plays important roles in host defence responses and inflammatory diseases. In addition to IL-17B, members of the IL-17 family include IL-17A, IL-17C, IL-17D, IL-17E and IL-17F. The six IL-17 cytokines are highly conserved at C terminus, and contain five spatially conserved cysteine residues that mediate dimerization. Expression of IL-17B protein has been reported in neurons, testis, ovary, stomach, pancreas, small intestine and chondrocytes. IL-17B binds to Interleukine-17 receptor B (IL-17 RB) and induces the production of inflammatory cytokines and the infiltration of inflammatory immune cells.



Purity-SDS-PAGE:



Greater than 95% as determined by reducing SDS-PAGE.

