

## 重组小鼠白介素22(IL-22)

IL-22, Recombinant Mouse Interleukin-22(C-mFc)

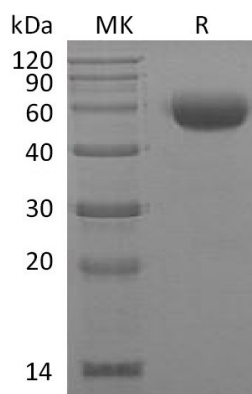
Cat. No.: MA1404-1    Size: 10µg

<b>Source:</b>	Human Cells
<b>Description:</b>	Recombinant Mouse Interleukin-22 is produced by our Mammalian expression system and the target gene encoding Leu34-Val179 is expressed with a mouse IgG1 Fc tag at the C-terminus.
<b>Accession:</b>	<a href="#">Q9JJY9</a>
<b>Known As:</b>	Interleukin-22; IL-22; IL-TIF alpha; IL-10-related T-cell-derived-inducible factor; IL-TIF; IL22; Interleukin-22a; IL-22a
<b>Predicted Mol Mass:</b>	43.8 KDa
<b>Apparent Mol Mass:</b>	50-65 KDa, reducing conditions
<b>Endotoxin:</b>	< 1 EU/µg as determined by LAL test.
<b>Formulation:</b>	Lyophilized from a 0.2 µm filtered solution of 20mM PB, 150mM NaCl, pH 7.4.
<b>Reconstitution:</b>	Always centrifuge tubes before opening. Do not mix by vortex or pipetting. It is not recommended to reconstitute to a concentration less than 100µg/ml. Dissolve the lyophilized protein in distilled water. Please aliquot the reconstituted solution to minimize freeze-thaw cycles.
<b>Shipping:</b>	The product is shipped at ambient temperature. Upon receipt, store it immediately at the temperature listed below.
<b>Storage:</b>	Lyophilized protein should be stored at ≤ -20°C, stable for one year after receipt. Reconstituted protein solution can be stored at 2-8°C for 2-7 days. Aliquots of reconstituted samples are stable at ≤ -20°C for 3 months.
<b>Background:</b>	Interleukin-22 (IL-22) was initially identified as a gene induced by IL-9 in mouse T cells and mast cells. Mouse IL-22 cDNA encodes a 179 amino acid residue protein with a putative 33 amino acid signal peptide that is cleaved to generate a 147 amino acid mature protein that shares approximately 79% and 22% sequence identity with human IL22 and IL10, respectively. IL22 has been shown to activate STAT-1 and STAT-3 in several hepatoma cell lines and up-regulate the production of acute phase proteins. IL-22 is produced by normal mouse T cells upon Con A activation. Mouse IL-22 expression is also induced in various organs upon lipopolysaccharide injection, suggesting that IL-22 may be involved in inflammatory responses. The functional IL-22 receptor complex consists of two receptor subunits, IL-22R (previously an orphan



receptor named CRF2-9) and IL-10R $\beta$  (previously known as CRF2-4), belonging to the class II cytokine receptor family.

### Purity-SDS-PAGE:



Greater than 95% as determined by reducing SDS-PAGE.

S250101

大连美仑生物技术有限公司

官网: <https://www.meilunbio.com/>

电话/邮箱: 0411-62910999 sales@meilune.com

本产品仅供科研使用

