

重组小鼠白介素23(IL-23)

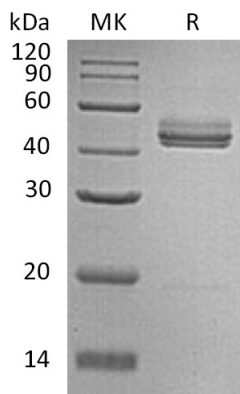
IL-23, Recombinant Mouse Interleukin-23

Cat. No.: MA1406-1 Size: 10µg

Source:	Human Cells
Description:	Recombinant Mouse Interleukin-23 is produced by our Mammalian expression system and the target gene encoding Val22-Ala196&Met23-Ser335 is expressed.
Accession:	Q9EQ14 & P43432
Known As:	SGRF; IL-23p19; CLMF p40; IL-12 subunit p40; NKSF2
Predicted Mol Mass:	19.7&35.8 KDa
Apparent Mol Mass:	18&40-55 KDa, reducing conditions
Endotoxin:	< 1 EU/µg as determined by LAL test.
Formulation:	Lyophilized from a 0.2 µm filtered solution of PBS, pH 7.4.
Reconstitution:	Always centrifuge tubes before opening. Do not mix by vortex or pipetting. It is not recommended to reconstitute to a concentration less than 100µg/ml. Dissolve the lyophilized protein in distilled water. Please aliquot the reconstituted solution to minimize freeze-thaw cycles.
Shipping:	The product is shipped at ambient temperature. Upon receipt, store it immediately at the temperature listed below.
Storage:	Lyophilized protein should be stored at ≤ -20°C, stable for one year after receipt. Reconstituted protein solution can be stored at 2-8°C for 2-7 days. Aliquots of reconstituted samples are stable at ≤ -20°C for 3 months.
Background:	Interleukin 23 (IL-23) is a heterodimeric cytokine composed of two disulfide-linked subunits, a p19 subunit that is unique to IL-23, and a p40 subunit that is shared with IL-12. The p19 subunit has homology to the p35 subunit of IL-12, as well as to other single chain cytokines such as IL-6 and IL-11. The p40 subunit is homologous to the extracellular domains of the hematopoietic cytokine receptors. Although p19 is expressed by activated macrophages, dendritic cells, T cells, and endothelial cells, only activated macrophages and dendritic cells express p40 concurrently to produce IL-23. IL-23 has biological activities that are similar to, but distinct from IL-12. Both IL-12 and IL-23 induce proliferation and IFN-gamma production by human T cells. While IL-12 acts on both naive and memory human T cells, the effects of IL-23 is restricted to memory T cells.

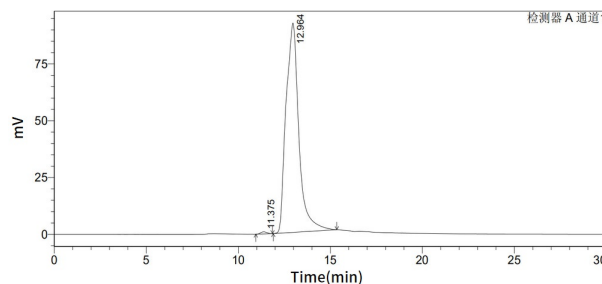


Purity-SDS-PAGE:



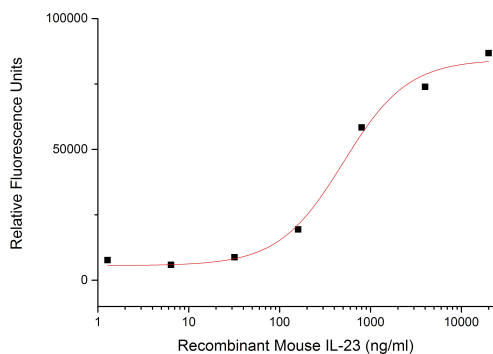
Greater than 95% as determined by reducing SDS-PAGE.

Purity-SEC-HPLC:



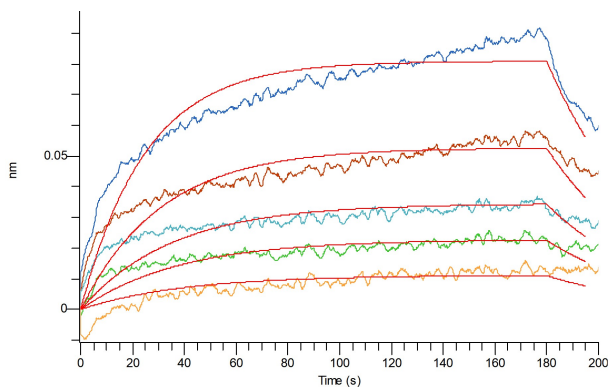
Greater than 90% as determined by SEC-HPLC. (QC verified)

Bioactivity-Cell Based Assay:



Measured by its ability to induce STAT reporter activity in 293F human embryonic kidney cells. The ED50 for this effect is 501.08 ng/ml.

Bioactivity-BLI:



Loaded Anti-Human IL23-P19 mAb on Pro-A Biosensor, can bind Recombinant Mouse IL-23 (Cat#MA1406) with an affinity constant of 1.57 μ M as determined in BLI assay. (Regularly tested)

S250101

