

重组人白介素36 (IL-36)

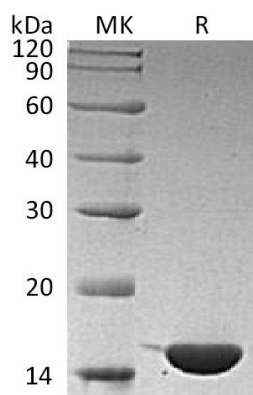
IL-36 ,Human;Recombinant Human Interleukin 36

Cat. No.: MA1418-1 Size: 10µg

Source:	E.coli
Description:	Recombinant Human Interleukin-36 Gamma is produced by our E.coli expression system and the target gene encoding Ser18-Asp169 is expressed.
Accession:	Q9NZH8
Known As:	Interleukin-36 gamma; IL36G; IL-1-related protein 2; IL-1RP2; IL-1 epsilon; IL-1F9; Interleukin-1 homolog 1; IL-1H1
Predicted Mol Mass:	17 KDa
Apparent Mol Mass:	14-16 KDa, reducing conditions
Endotoxin:	< 1 EU/µg as determined by LAL test.
Formulation:	Lyophilized from a 0.2 µm filtered solution of 20mM Tris-HCl, 100mM NaCl, 0.1mM EDTA, pH 8.0.
Reconstitution:	Always centrifuge tubes before opening.Do not mix by vortex or pipetting. It is not recommended to reconstitute to a concentration less than 100µg/ml. Dissolve the lyophilized protein in distilled water. Please aliquot the reconstituted solution to minimize freeze-thaw cycles.
Shipping:	The product is shipped at ambient temperature. Upon receipt, store it immediately at the temperature listed below.
Storage:	Lyophilized protein should be stored at ≤ -20°C, stable for one year after receipt. Reconstituted protein solution can be stored at 2-8°C for 2-7 days. Aliquots of reconstituted samples are stable at ≤ -20°C for 3 months.
Background:	Interleukin-36 gamma (IL-36γ) is a member of the interleukin 1 cytokine family that includes three closely related genes, IL-36α, β, and γ, formerly known as IL-1F6, F8, and F9 respectively. IL-36α has been detected in both neuronal and synovial tissue, whereas IL-36β and IL-36γ are expressed in both cutaneous and mucosal epithelial cells, including the respiratory tract. IL-36β and IL-36γ stimulate proliferation, maturation and/or cytokine expression by innate immune cells (such as keratinocytes and dendritic cells), and adaptive immune cells (neutrophils and T-cells) in both humans and mice. The activity of IL-36α is mediated by interleukin 1 receptor-like 2 (IL1RL2/IL1R-rp2), and is specifically inhibited by interleukin 1 family, member 5 (IL1F5/IL-1 delta). IL-36γ plays an important role in communicating the cell death to surrounding cells.

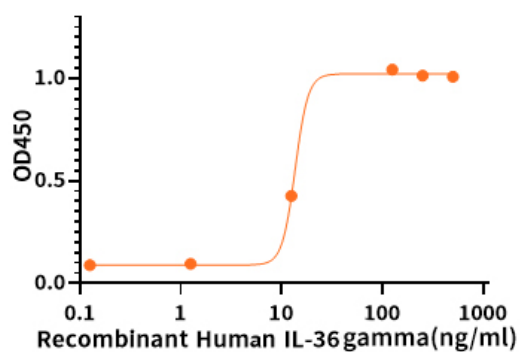


Purity-SDS-PAGE:



Greater than 95% as determined by reducing SDS-PAGE.

Bioactivity-Cell Based Assay:



Measured by its ability to induce IL-8 secretion in A431 human epithelial carcinoma cells. The ED50 for this effect is 5-20 ng/ml. (QC verified)

S250101

