

## Recombinant Human SCF

Cat. No.:MGC080 size : 10 $\mu$ g / 50 $\mu$ g / 1mg

### Characteristics:

<b>Source</b>	Chinese Hamster Ovary cell line
<b>Description</b>	Human SCF (Glu 26-Ala 190) Accession # P21583
<b>Predicted molecular mass</b>	18.5 kDa

### Specification:

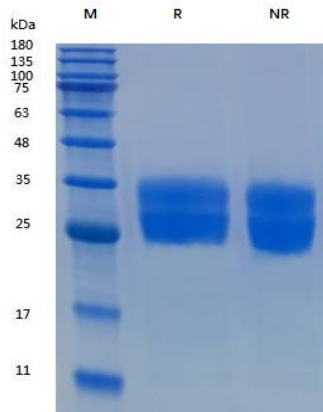
<b>Appearance</b>	White powder, Colorless clear liquid after reconstitution
<b>Purity</b>	$\geq$ 95%, by SDS-PAGE (under reducing (R) & Non-reducing conditions, visualized by Coomassie staining)
<b>Endotoxin</b>	$\leq$ 0.01EU/ $\mu$ g by the LAL method
<b>Activity</b>	Measured in a cell proliferation assay using TF-1 cells. The ED <sub>50</sub> for this effect is 5-8 ng/mL
<b>Formulation</b>	Lyophilized from a 0.22 $\mu$ m-filtered solution containing PBS, 5% mannitol and 0.01% Tween 80, pH 7.4

### Handling and Storage:

<b>Reconstitution</b>	It is recommended to redissolve in sterile deionized water.
<b>Shipping</b>	Wet ice (seasonal)
<b>Storage &amp; Stability</b>	36 months at -20°C to -80°C in lyophilized state 6 months at -20°C to -80°C under sterile conditions after reconstitution 7-10 days at 2°C to 8°C under sterile conditions after reconstitution <b>Use a manual defrost freezer and avoid repeated freeze-thaw cycles.</b>

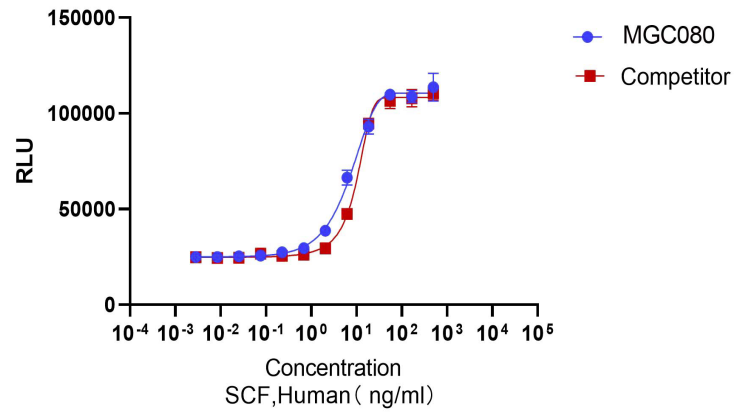
**Data:**

**SDS-PAGE**



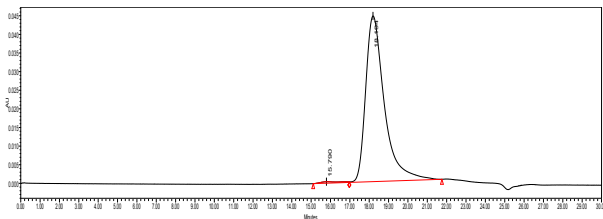
Recombinant Human SCF (Cat. No. MGC080) SDS-PAGE under reducing (R) & Non-reducing conditions. The gel was stained with MGC080 SDS-PAGE.

**Bioactivity**



Recombinant Human SCF (Cat. No. MGC080) stimulates proliferation of TF-1 cells. The ED<sub>50</sub> for this effect is 5-8ng/mL. The activity of MGC080 was higher than other competing products.

**SEC-HPLC**



S260401